



**SPC TRADING COMPANY**

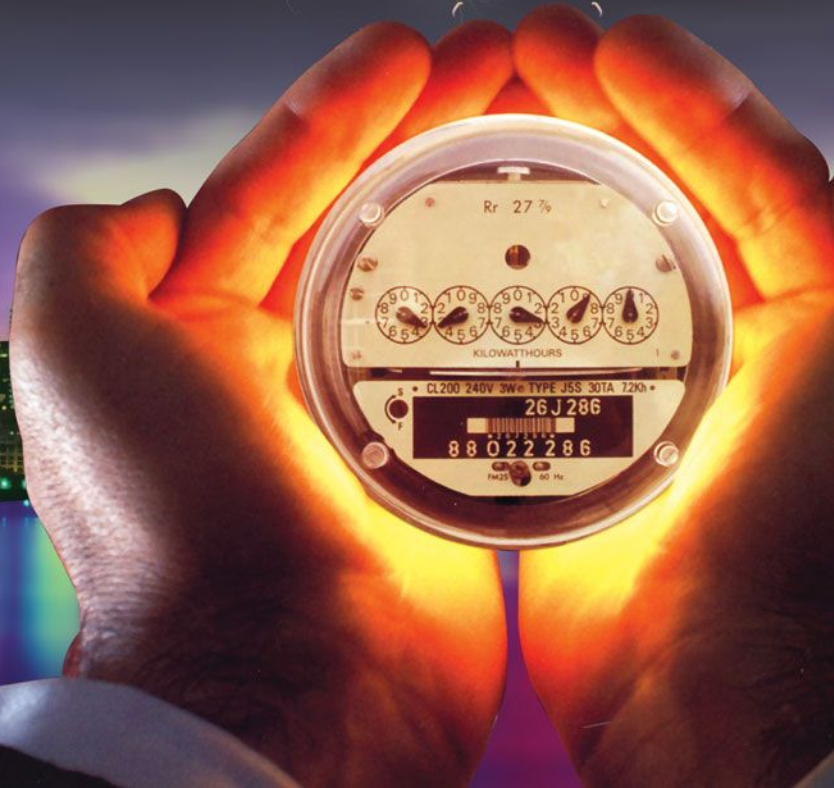
Trading industrial's equipment & Agriculture's machinery

**TODAY POWER - FUTURE TECHNOLOGY**

[www.spc-trading.com](http://www.spc-trading.com)

---

*ALTERNATOR & GENERATING SETS*



## CED-CL Type

| Model      | Voltage (v) | Rated Output (kw) | Engine Model | Starting System | Dimensions (L x W x H)(mm) |
|------------|-------------|-------------------|--------------|-----------------|----------------------------|
| CED 2500CL | 220         | 2                 | CF 170FE     | Recoil          | 610 x 460 x 520            |
| CED 4000CL | 220         | 3                 | CF 178FE     | Recoil          | 705 x 460 x 535            |
| CED 6500CL | 220         | 4.5               | CF 186FE     | Recoil          | 735 x 485 x 670            |



www.spc-trading.com

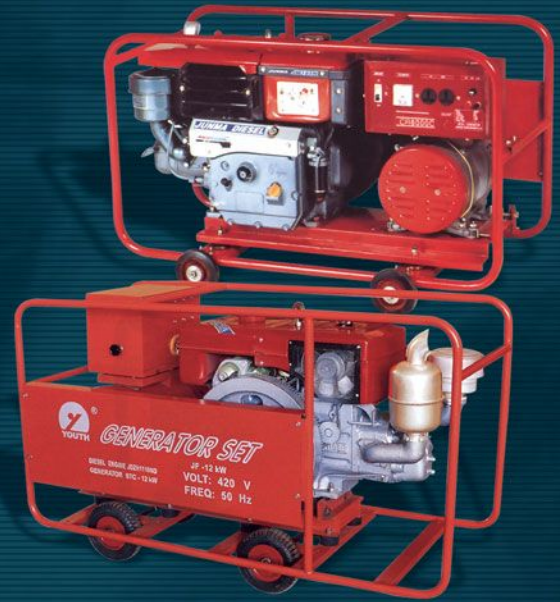
| Model   | Output (kw) |              | Engine    |       | Cylinder | Fuel Consumption (g/kw.h) | Generator |      | Weight (kg) | Dimensions (L x W x H)(mm) |
|---------|-------------|--------------|-----------|-------|----------|---------------------------|-----------|------|-------------|----------------------------|
|         | (Standby)   | (Continuous) | (model)   | (kva) |          |                           | (model)   | (kw) |             |                            |
| GFS-12  | 12          | 13.2         | 2100      | 20    | 2        | 265.2                     | STC-12    | 12   | 500         | 145 x 65 x 110             |
| GFS-24  | 24          | 26.5         | 4100D     | 45    | 4        | 268.4                     | STC-24    | 24   | 800         | 178 x 75 x 115             |
| GFS-30  | 30          | 33           | 495ZD     | 50    | 4        | 251.6                     | STC-30    | 30   | 860         | 195 x 80 x 119             |
| GFS-40  | 40          | 44           | R4105D    | 60    | 4        | 266.6                     | STC-40    | 40   | 980         | 195 x 85 x 135             |
| GFS-50  | 50          | 55           | R4105ZD   | 80    | 4        | 224                       | STC-50    | 50   | 1050        | 195 x 85 x 135             |
| GFS-75  | 75          | 82.5         | R6105ZD   | 115   | 6        | 224                       | TWG-75    | 75   | 1260        | 245 x 90 x 140             |
| GFS-100 | 100         | 110          | R6105AZLD | 150   | 6        | 218                       | TWG-100   | 100  | 1370        | 250 x 90 x 140             |
| GFS-120 | 120         | 132          | R6105IZLD | 180   | 6        | 218                       | TWG-120   | 120  | 1460        | 260 x 90 x 145             |

## GFS Type (silent)



| Model   | Voltage (v) | Rated Output (kw) | Engine Model | Starting System | Dimensions (L x W x H)(mm) |
|---------|-------------|-------------------|--------------|-----------------|----------------------------|
| GF1-3K  | 220/380     | 3                 | CF175NM      | Electric        | 1050 x 500 x 720           |
| GF1-5K  | 220/380     | 5                 | S195NM       | Electric        | 1320 x 650 x 860           |
| GF1-8K  | 220/380     | 8                 | ZS1100NM     | Electric        | 1320 x 650 x 860           |
| GF1-10K | 220/380     | 10                | ZS1105NM     | Electric        | 1320 x 650 x 860           |
| GF1-12K | 220/380     | 12                | ZS1110NM     | Electric        | 1320 x 650 x 860           |
| GF1-15K | 220/380     | 15                | ZS1115NM     | Electric        | 1320 x 650 x 860           |
| CED 5K  | 220         | 5                 | JM185N       | Electric        | 1075 x 565 x 690           |
| CED 7K  | 220         | 7                 | ZS195NM      | Electric        | 1180 x 620 x 855           |
| CED 8K  | 220         | 8                 | ZS1100NM     | Electric        | 1180 x 620 x 855           |

## CED-K & GF1 Type



## CED-DWG Type (Welding Machine)

| Model       | Voltage (v) | Rated Output (kw) | Engine Model | Starting System | Dimensions (L x W x H)(mm) |
|-------------|-------------|-------------------|--------------|-----------------|----------------------------|
| CED 6500DWG | 220         | 1.6               | CF 186FE     | Electric        | 775 x 485 x 580            |

## CF-LN Type

| Model     | Voltage (v) | Rated Output (kw) | Engine Model | Starting System | Dimensions (L x W x H)(mm) |
|-----------|-------------|-------------------|--------------|-----------------|----------------------------|
| CF 3500LN | 220         | 3.3               | CF 178F      | Electric        | 713 x 596 x 687            |
| CF 5000LN | 220         | 4.6               | CF 186F      | Electric        | 910 x 520 x 740            |
| CF 6500LN | 220         | 4.5               | CF 186FE     | Electric        | 920 x 520 x 700            |

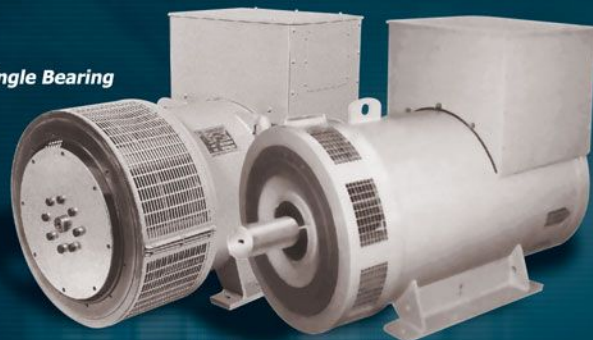


| KW    | KVA   |
|-------|-------|
| 30    | 37.5  |
| 40    | 50    |
| 50    | 62.5  |
| 64    | 80    |
| 75.2  | 94    |
| 90    | 112.5 |
| 100   | 125   |
| 120   | 150   |
| 150   | 187.5 |
| 200   | 250   |
| 249.6 | 312   |
| 300   | 375   |

**L.R.Y. Type**  
( A - Class )

SAE 1, 2, 3

Single Bearing



Two Bearing

[www.spc-trading.com](http://www.spc-trading.com)

**S.T.M. Type**  
( A - Class )

| KW   | KVA   |
|------|-------|
| 20   | 25    |
| 22   | 27.5  |
| 25.2 | 31.5  |
| 30   | 37.5  |
| 34   | 42.5  |
| 40   | 50    |
| 48   | 60    |
| 58   | 72.5  |
| 68   | 85    |
| 75.2 | 94    |
| 80   | 100   |
| 91.2 | 114   |
| 100  | 125   |
| 112  | 140   |
| 140  | 175   |
| 150  | 187.5 |
| 160  | 200   |
| 200  | 250   |
| 250  | 312.5 |
| 300  | 375   |

Single Bearing



Two Bearing

Single Bearing : (SAE 1/14 , 1/11.5 , 3/11.5)

| Model   | Voltage (v) | Power (kw) | Power Factor (Cos φ) | Pole number | Current (A) |
|---------|-------------|------------|----------------------|-------------|-------------|
| ST-2    | 220         | 2          | 1                    | 4           | 8.7         |
| ST-3    | 220         | 3          | 1                    | 4           | 13          |
| ST-5    | 220         | 5          | 1                    | 4           | 21.8        |
| ST-7.5  | 220         | 7.5        | 1                    | 4           | 32.6        |
| ST-10   | 220         | 10         | 1                    | 4           | 43.5        |
| ST-12   | 220         | 12         | 1                    | 4           | 52.2        |
| ST-15   | 220         | 15         | 1                    | 4           | 65.3        |
| ST-20   | 220         | 20         | 1                    | 4           | 87          |
| ST-24   | 220         | 24         | 1                    | 4           | 104         |
| STC-3   | 380         | 3          | 0.8                  | 4           | 5.4         |
| STC-5   | 380         | 5          | 0.8                  | 4           | 9           |
| STC-7.5 | 380         | 7.5        | 0.8                  | 4           | 13.5        |
| STC-10  | 380         | 10         | 0.8                  | 4           | 18.1        |
| STC-12  | 380         | 12         | 0.8                  | 4           | 21.7        |
| STC-15  | 380         | 15         | 0.8                  | 4           | 27.1        |
| STC-20  | 380         | 20         | 0.8                  | 4           | 36.1        |
| STC-24  | 380         | 24         | 0.8                  | 4           | 43.3        |
| STC-30  | 380         | 30         | 0.8                  | 4           | 54.1        |
| STC-40  | 380         | 40         | 0.8                  | 4           | 72.2        |
| STC-50  | 380         | 50         | 0.8                  | 4           | 90.2        |
| STC-60  | 380         | 60         | 0.8                  | 4           |             |
| STC-75  | 380         | 75         | 0.8                  | 4           |             |



### ST & STC Type ( C - Class )



| Model    | Voltage (v) | Power (kw) | Power Factor (Cos φ) | Rated Capacity (kva) | Current (A) |
|----------|-------------|------------|----------------------|----------------------|-------------|
| TFW2-64  | 380         | 64         | 0.8                  | 80                   | 115.6       |
| TFW2-75  | 380         | 75         | 0.8                  | 93.75                | 135.5       |
| TFW2-100 | 380         | 100        | 0.8                  |                      |             |
| TFW2-120 | 380         | 120        | 0.8                  | 150                  | 216.8       |

### TFW Type ( B - Class )

### SD & SDC Type ( C - Class )

| Model    | Voltage (v) | Rated Output (kw) | Rated Output (kva) | Power Factor (Cos φ) | Welding (A) | Welding (v) |
|----------|-------------|-------------------|--------------------|----------------------|-------------|-------------|
| SD 5     | 220         | 5                 | 5                  | 1                    | 70-200      | 40          |
| SD 7.5   | 220         | 7.5               | 7.5                | 1                    | 80 - 200    | 40          |
| SD 10    | 220         | 10                | 10                 | 1                    | 100 - 230   | 40          |
| SD 12.5  | 220         | 12.5              | 12.5               | 1                    | 140 - 300   | 40          |
| SDC 5    | 380         | 5                 | 6.3                | 0.8                  | 60-160      | 40          |
| SDC 7.5  | 380         | 7.5               | 9.4                | 0.8                  | 70 - 180    | 40          |
| SDC 10   | 380         | 10                | 12.5               | 0.8                  | 80 - 225    | 40          |
| SDC 12.5 | 380         | 12.5              | 15                 | 0.8                  | 100 - 280   | 40          |





## CEN-K model (silent)

| Model                           | CEN15K                                  | CEN20K | CEN25K |
|---------------------------------|---|--------|--------|
| Rated Max AC Power Output (kva) | 13                                      | 18     | 21     |
| Rated Voltages (v)              | 220 - Single Phase<br>380 - Three Phase |        |        |
| No. of Rotor Poles              | 2                                       |        |        |
| Driven speed of Rotor           | 3000                                    |        |        |
| Rotor Excitation System         | Brushless ( With Damper coil)<br>AVR    |        |        |
| Type of Stator                  | 4 Wire                                  |        |        |
| Rotor / Stator insulation       | Class F                                 |        |        |
| Engines                         | Water-cooles                            |        |        |
| Cylinders & Arrangement         | 4                                       |        |        |
| Displacement (L)                | 1.1                                     | 1.3    | 2      |
| Air Intake System               | Naturally Aspirated                     |        |        |
| Lifter Type                     | Hydraulic                               |        |        |
| Rated Synchronous (rpm)         | 50Hz / 3000rpm                          |        |        |
| Rated Output (kw)               | 19                                      | 28     | 37     |

## CNG & LPG (Gen-Set)

## CNG & LPG & Gasoline (Generator)

| Model                           | 3000X                                | 5000X (E)   | 6500X (E) |
|---------------------------------|--------------------------------------|-------------|-----------|
| Rated max. AC power Output (kw) | 1.6                                  | 4           | 5         |
| Max. power Output (kw)          | 1.76                                 | 4.5         | 5.5       |
| Rated Voltage (v)               | 220                                  | 220         | 220       |
| Amps                            |                                      | 16.5        | 21        |
| Engine                          | LPG, 1Cylinder, 4 Stroke, Air cooled |             |           |
| Rated Synchronous (rpm)         | 50Hz - 3000 rpm                      |             |           |
| Type of Fuel                    | Natural Gas / Prpane Vapor           |             |           |
| Dimensions (L x W x H) (mm)     | 615x455x455                          | 680x510x540 |           |
| Generator weight (kg)           | 47                                   | 83          | 86        |



## CEN & CEG (XE) Type